

LADDER UP INTERNET AND CAGE POSITION BY SITE

Aurora - Room 342

Back corner of room, cage should be in place, internet port if disconnected marked with "LU"



Brighton Park



LADDER UP INTERNET AND CAGE POSITION BY SITE

Cicero

You will need to setup on the opposite side of the cafeteria this year, the internet port is on other side. The cable should be already plugged in and on the floor for you to grab and plug into the internet port (yellow one) on the back of the router.



LADDER UP INTERNET AND CAGE POSITION BY SITE

Dunning - Lab 113

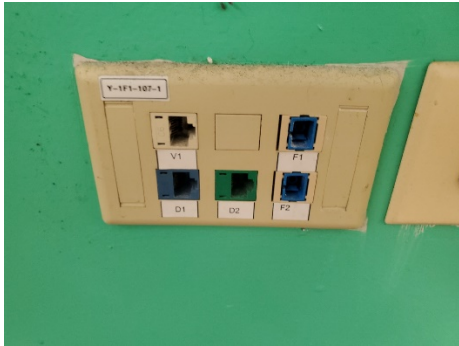
Disconnect blue wire from under the table and connect our blue wire. Be sure to reconnect everything back at end of day.



LADDER UP INTERNET AND CAGE POSITION BY SITE

Englewood – Room Y107

Plug into port D1 of the box in middle of front wall.



Hermosa

Place cage closest to the glass in the front of the prep room, you have a cellular modem so you will not plug into the wall internet. White box behind router is the cellular modem.



LADDER UP INTERNET AND CAGE POSITION BY SITE

Lawndale

Roll cage out of room and place between guard desk and building column. Under guard desk is ethernet port (inside small white box, with pull down covering) and strip plug to power everything.



Loop

Cage should be placed in the back of the QR area (small area behind the large desk), there is also a modem in the prep room (large room in the back of our space.) This site uses cellular modems so there is no connection to wall internet. QR laptops and dark grey laptop should be connected to ChanceTheRouter and all Tax Preparer laptops should be connected to PrepVZWChance.

LADDER UP INTERNET AND CAGE POSITION BY SITE

Melrose Park

Cage should be placed against the glass closest to the street. This site uses cellular modems so there is no connection to wall internet. QR laptops and dark grey laptop should be connected to ChanceTheRouter and all Tax Preparer laptops should be connected to PrepVZWChance. You will need to pull the 2 modems out of the cage and place on top of the cage for the session. The one labeled with a Prep goes on the right side. The one without the Prep goes on the left and gets power and the ethernet cable plugged into one of the LAN ports.



LADDER UP INTERNET AND CAGE POSITION BY SITE



LADDER UP INTERNET AND CAGE POSITION BY SITE

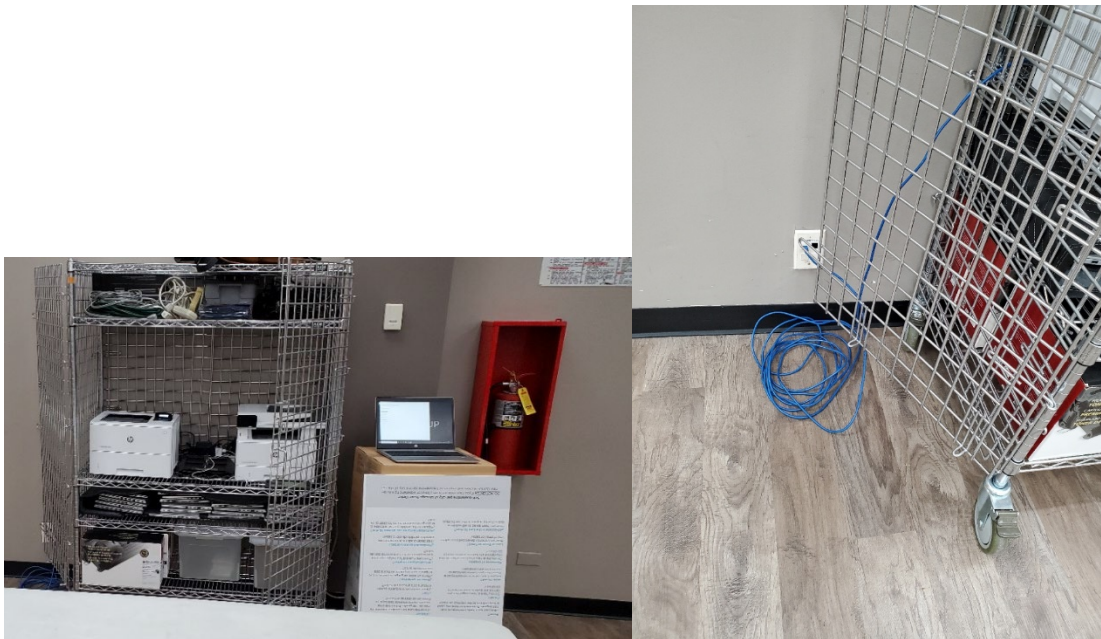
Plainfield

Plug cage and ethernet port in,



Pullman

Place cage in back wall by fire extinguisher. Plug into top Left port.



LADDER UP INTERNET AND CAGE POSITION BY SITE

Uptown

This should be always setup and plugged in, keep cage in room 1571. Do NOT pull cage out into the cafeteria. If disconnected, plug back into port 1571-05 (top right.)

